



SIXTH FORM PROSPECTUS

CONTACT: Sheldon School, Hardenhuish Lane, Chippenham, Wiltshire SN14 6HJ

PHONE: 01249 766020 FAX: 01249 766030

EMAIL: sixthform@sheldonschool.co.uk

HEADTEACHER: Pete Lynch

www.sheldonschool.co.uk

[#sheldonsixthform](https://www.instagram.com/sheldonsixthform)



BE KIND – BE BRAVE – BE THE BEST YOU

Welcome to Sheldon School Sixth Form

Your Sixth Form years should be the most exciting time in your school career; they are certainly the most important as you determine the path you will take in future life. At Sheldon you will be able to choose the subjects you most want to study – we have over 35 courses on offer, and our size means that there is more than one teaching group in many subjects, making clashes rare. You will have much more independence both academically and socially, and the chance to get involved in an extensive range of enrichment opportunities. Our excellent study facilities will help you develop the skills essential for success at this level and beyond.

Sixth Form study takes significant commitment; every year we see our students achieve more than they could have believed possible and grow in confidence as they work towards their chosen destinations. So whether you are already at Sheldon or thinking of joining us, we hope that you will want to find out more about what Sheldon Sixth Form has to offer and then choose to join us – we look forward to welcoming you to our thriving community.

The Sixth Form Team

ixth Form



“ IN THE SIXTH FORM, LESSONS ARE INTERESTING AND GIVE STUDENTS A VARIETY OF ACTIVITIES WITH OPPORTUNITIES TO WORK INDEPENDENTLY”

OFSTED



EXCELLENT RESULTS

We are proud of our strong track record of A level success. Results have been consistently strong over many years. Schools locally agreed not to publicise their results from the summers of 2020-2 due to COVID impacting schools in unequal ways. The results for 2023 are opposite although we do not have any value-added progress measures for them as they were the cohort who had GCSEs directly impacted by COVID. The last set of pre-pandemic results from 2019 placed us in the top 20% nationally for the progress that students make (value added). Our high retention rate ensures all students have the opportunity to be part of that success.

“A AND AS LEVEL RESULTS ARE HIGH IN COMPARISON WITH OTHER SCHOOLS.”

OFSTED

OUTSTANDING SUPPORT

Individual support and guidance are very important to us. Our comprehensive Personal Development Curriculum, delivered daily by our team of specialist Sixth Form tutors includes study skills, maintaining mental health, careers education and options at 18 as well as preparing for life after Sheldon. Your tutor will also hold regular one-to-one meetings with you to offer individual support and advice. Each Year 12 tutor group is paired with a Year 13 group to enable final year students to share their experiences with those new to advanced level study. We also have a dedicated Sixth Form Pastoral Support Worker and our own whole school counsellor to support students through personally challenging times. So, whatever your aspirations after Sixth Form, we will do our best to help you get there.

A LEVEL RESULTS

Subject	Entries	A*	A	B	C	D	E	U
Art – Fine Art	9	0	1	4	1	1	2	0
Art – Textiles	3	0	1	2	0	0	0	0
Art – Photography	2	0	0	0	0	1	1	0
Biology	20	1	3	4	4	3	5	0
Business Studies	40	1	6	15	10	7	1	0
Chemistry	12	0	3	1	4	3	1	0
Computer Science	11	0	2	2	2	2	0	3
Criminology	30	1	3	7	9	8	1	1
DT – Fashion and Textiles	8	0	1	3	2	2	0	0
DT – Product Design	4	0	0	2	0	1	1	0
Dance	1	0	0	0	1	0	0	0
Drama and Theatre Studies	10	0	0	4	1	4	1	0
Economics	25	0	4	9	5	6	1	0
English Language	14	0	1	9	1	3	0	0
English Literature	9	0	0	4	0	4	1	0
French	3	0	1	1	0	0	1	0
Further Mathematics	4	1	1	2	0	0	0	0
Geography	14	0	6	2	5	1	0	0
German	3	0	1	1	0	1	0	0
Government and Politics	15	0	1	4	5	4	1	0
History	25	2	4	6	4	9	0	0
Mathematics	31	4	9	5	4	4	3	2
Media Studies	7	0	1	2	2	2	0	0
Music Technology	2	0	0	1	1	0	0	0
Physical Education	12	0	0	2	2	3	4	1
Physics	15	2	2	7	2	1	0	1
Psychology	53	1	2	11	12	9	18	0
Sociology	23	1	3	7	7	2	3	0



ADDITIONAL ENRICHMENT OPPORTUNITIES: BUILDING YOUR SKILLS

A comprehensive support package is available to those students who are applying for highly competitive options beyond Sheldon. We are proud of our many students who have successfully gained places at Oxford and Cambridge or progressed to medicine or veterinary medicine courses in recent years. We are equally proud of those students who are taking up employment and higher level apprenticeships with some of the countries leading companies.

UNIVERSITY TASTER COURSES

Many students make good use of the chance to experience university taster courses. Both 'Access to Bristol' and 'On Track to Bath' are well established, while others make use of online options from a wide variety of universities across the country. Thinking about higher education often starts with the annual visit to the local UCAS Exhibition each April.

LEAVERS' EXPEDITION

Every year a group of intrepid Sheldon students complete their time in the Sixth Form with a 'mini-gap' expedition involving community project work, a challenge and some time to relax in a distant location. Most recently students have visited Zanzibar, Zambia, Cambodia and Vietnam.

ELECTIVES PROGRAMME

In addition to Project 5000 we offer students the Electives Programme. This is a range of optional extras to enhance your Sixth Form experience and your CV. Core Maths is available for students who are not taking A Level maths but whose subjects demand this key skill area, whilst the resit GCSE maths and English groups support anyone who is yet to achieve a grade 4 in these key subjects. Others can opt to undertake the Extended Project Qualification, British Sign Language or the Duke of Edinburgh Gold Award. It is possible to take more than one option and the full Electives Programme options are published in September each year.

AND LOTS MORE . . .

There are many other opportunities as well, from music and drama, or the student-led debating club, to the chance to be involved in Ten Tors and DoFE. And if we don't have a club that you would like to see, we will help you set it up!

CORE ENRICHMENT: MORE THAN JUST ACADEMIC SUCCESS

Being a Sixth Former is about much more than just exam results. This is an important time for developing your wider skills and personality to take into your adult life. We make it a priority to give you a host of opportunities that will enable you to develop these key 'life skills'.

EMPLOYABILITY SKILLS

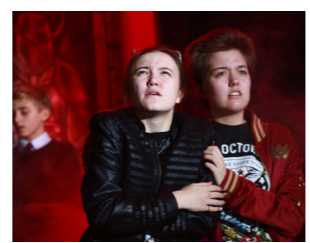
Developing employability skills forms a key part of the daily tutorial programme. At the end of Year 12, time is set aside for a week's work experience or other activity that will help you decide on possible future options. Organising this for yourself is a key requirement, giving you not only an insight into potential careers, but the chance to develop the skills you will require for the world of work too.

SIXTH FORM GAMES

All students take part in Sixth Form games on a Wednesday afternoon. A wide range of options are available both on and off site, from dodgeball to Zumba, led by the PE team and external instructors. There are competitive fixtures against other schools in several sports – our rugby team has been particularly successful in recent years – as well as termly internal competitions. As well as being designed to help promote health and fitness, it also further cements social bonds across the Sixth Form.

PROJECT 5000

Every Sheldon Sixth Former is expected to give at least one 50 minute lesson per week (some give much more) to their local community. This could be mentoring younger students, helping in lower school lessons, reading with students in Learning Support or volunteering in the wider community. We have had students supporting in primary schools, care homes, charity shops etc. We, as a Sixth Form, are aiming to collectively 'give back' over 5000 hours to the local community, hence the name Project 5000.





THERE ARE MANY OPPORTUNITIES FOR STUDENTS TO TAKE ON RESPONSIBILITIES; FOR EXAMPLE, BY ACTING AS SPORTS LEADERS, MENTORS, SUBJECT AMBASSADORS AND PREFECTS."

OFSTED

COMMUNITY INVOLVEMENT: LEADERS OF THE SCHOOL

Our Sixth Form Student Leadership Team is led by our Sixth Form President who is supported by student leadership representatives from Years 12 and 13 who oversee various committees such as Charity, Facilities/ Environment etc. The Sixth Form President also chairs the whole school Student Council. This allows you to give something back whilst developing self-confidence and communication skills.

SIXTH FORM PREFECTS

In Year 13 many students go on to become Sixth Form Prefects. The prefect team lead many school activities, helping with lessons and clubs, or mentoring younger pupils who need support. This allows you to give something back whilst developing self-confidence and communication skills.

MENTORING

Each year approximately 70 students volunteer to become main school mentors. You will be trained in mentoring skills and use these to support younger students across the school. Your support will be greatly appreciated by the students you help, and at the same time you will develop essential 'soft' skills highly regarded by universities and employers.

CHARITY

Sheldon Sixth Form has a strong track record of leading charity events across the school. Twice a year students don fancy dress to raise money, and there are lots of other events too. 'Sheldon does Strictly' is a highlight in the spring of either Year 12 or Year 13 when the Sixth Form take on the staff – and usually win. Other large fundraisers happen when there is not a 'Strictly', allowing students to showcase their musical talents. The Charity Committee leads on these events, with the Charity Committee representative being a key student in the school.

EXTERNAL APPLICANTS MENTORING TEAM

Each year between 15-40 students join our Sixth Form from other schools and overseas. A team of students volunteer to act as mentors to these new students to help them settle in. The team is almost always led by a student who was an external applicant themselves the previous year.





APPLICATIONS TIMELINE

SEPTEMBER + OCTOBER

PSRE information lessons

NOVEMBER - DECEMBER

Research courses and talk to teachers

THU 9TH NOVEMBER

Information evening at 6pm

FRI 12TH JANUARY

'On time' applications deadline

FEBRUARY

Individual discussions with a senior member of staff about course choices

MON 8TH - THUR 11TH JULY

Sixth Form Induction

THU 22ND AUGUST

GCSE results day

TO APPLY: Simply fill out an application form and return it to the Sixth Form office or sixthform@sheldonschool.co.uk

DESTINATIONS: BEYOND SHELDON

Most Sixth Formers make successful university applications either directly from Year 13 or during a gap year of work, travel and volunteering. Our success rate is very strong, with Sheldon students selecting a wide variety of courses. We have an excellent record of helping students gain places for medicine, veterinary medicine, Oxbridge and Russell Group universities, top music schools, as well elite universities overseas.

A growing number of Sheldon Sixth Formers are now considering higher and degree apprenticeships rather than university. There is a comprehensive support package on offer led by our independent careers advisor.

